

LANA GROSSA

Filati Handknitting # 64- Style # 56

Doppio



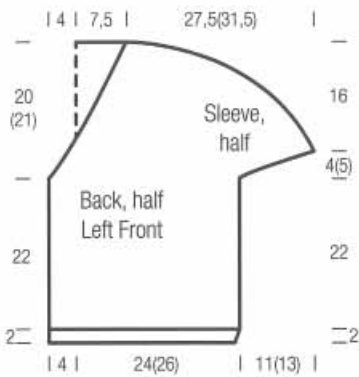
LANA

LANAGROSSA.DE

GR



SSA



on 53 (57) sts. Beginning and ending with a WS row and working first st after selvage st as p1, work in rib pat for 2 cm. Change to size 4.5 mm needles, work in openwork pat according to chart and shape sleeve at right edge same as for back. At same time, after having worked the first sleeve increase row, shape front edge on next WS row as foll: Bind off 1 st at beg of row, then every foll WS row 14 times, then every other WS row 8 times. At same time, when left front measures same length as back to overarm/shoulder, work overarm/shoulder shaping at right edge same as for back. No sts remain after overarm/shoulder and neck shaping is complete.

Right front: Work same as for left front, reversing all shaping.

Finishing: Pin pieces to measurements and block. Sew overarm/shoulder seams. With size 3 mm circular needle, beginning at cast-on edge of right front and ending at cast-on edge of left front, pick up and knit 55 sts along straight edge of right front, 43 (45) sts along shaped edge of right front, 27 sts along back neck edge, 43 (45) sts along shaped edge of left front and 55 sts along straight edge of left front = 223 (227) sts. Beginning with a WS row and working first st after selvage st

as p1 and last st before selvage st as p1, from * twice more, work to end. On foll WS row, cast on 1 st over each bound-off st. Loosely bind off all sts in pat. Sew side and sleeve seams. Sew on buttons.

as p1 and last st before selvage st as p1, from * twice more, work to end. On foll WS row, cast on 1 st over each bound-off st. Loosely bind off all sts in pat. Sew side and sleeve seams. Sew on buttons.

SHORT-SLEEVE JACKET IN OPENWORK PATTERN

Size 36/38 (40/42)

Instructions are given for first size. Figure in parenthesis refers to larger size. When only one figure is given, it applies to both sizes.

Materials: 300 (350) g of Lana Grossa Doppio (60% cotton, 40% polyamide; 130 m/50 g) in Natural/Green-Grey (col 3). Size 3 and 4.5 mm needles; size 3 mm circular needle, 100 cm long; four 15 mm buttons in natural/beige [by Union Knopf].

Rib pattern: K1, p1.

Openwork pattern: Work according to chart. Numbers at right edge of chart indicate RS rows; on WS rows, purl all sts and yos. Beg chart pat with sts before first arrow, work 4 sts between arrows for pat repeat, end with sts after 2nd arrow. Repeat rows 1 – 4 throughout. When working shaping, make sure each yo is paired with a decrease and vice versa.

Gauge: 18 sts and 32 rows = 10 x 10 cm in openwork pat on size 4.5 mm needles.

Back: With size 3 mm needles, cast on 89 (97) sts. Beginning and ending with a WS row, work in rib pat for 2 cm. Change to size 4.5 mm needles and work in openwork pat according to chart for 22 cm, ending with a WS row. Shape sleeves: Cast on 3 sts at beg of next 12 (16) rows, then 2 sts at beg of next 2 (0) rows = 129 (145) sts. Work increased sts into openwork pat. Cont in pat for 8 rows, ending with a WS row. Shape overarms/shoulders: Bind off 1 st at beg of next 26 (10) rows, 2 sts at beg of next 10 (26) rows, 7 sts at beg of next 6 rows and 6 sts at beg of next 2 rows. Bind off remaining 29 sts.

Left front: With size 3 mm needles, cast

Chart

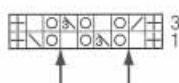


Chart key:

- ☐ = selvage st
- = k1
- ⊙ = yo
- ▧ = k2tog
- ⊞ = SKP: slip 1 st as if to knit, k1, pass slipped st over knitted st
- ⊞ = SK2P: slip 1 st as if to knit, k2tog, pass slipped st over knitted st